

ASSEMBLY INSTRUCTIONS

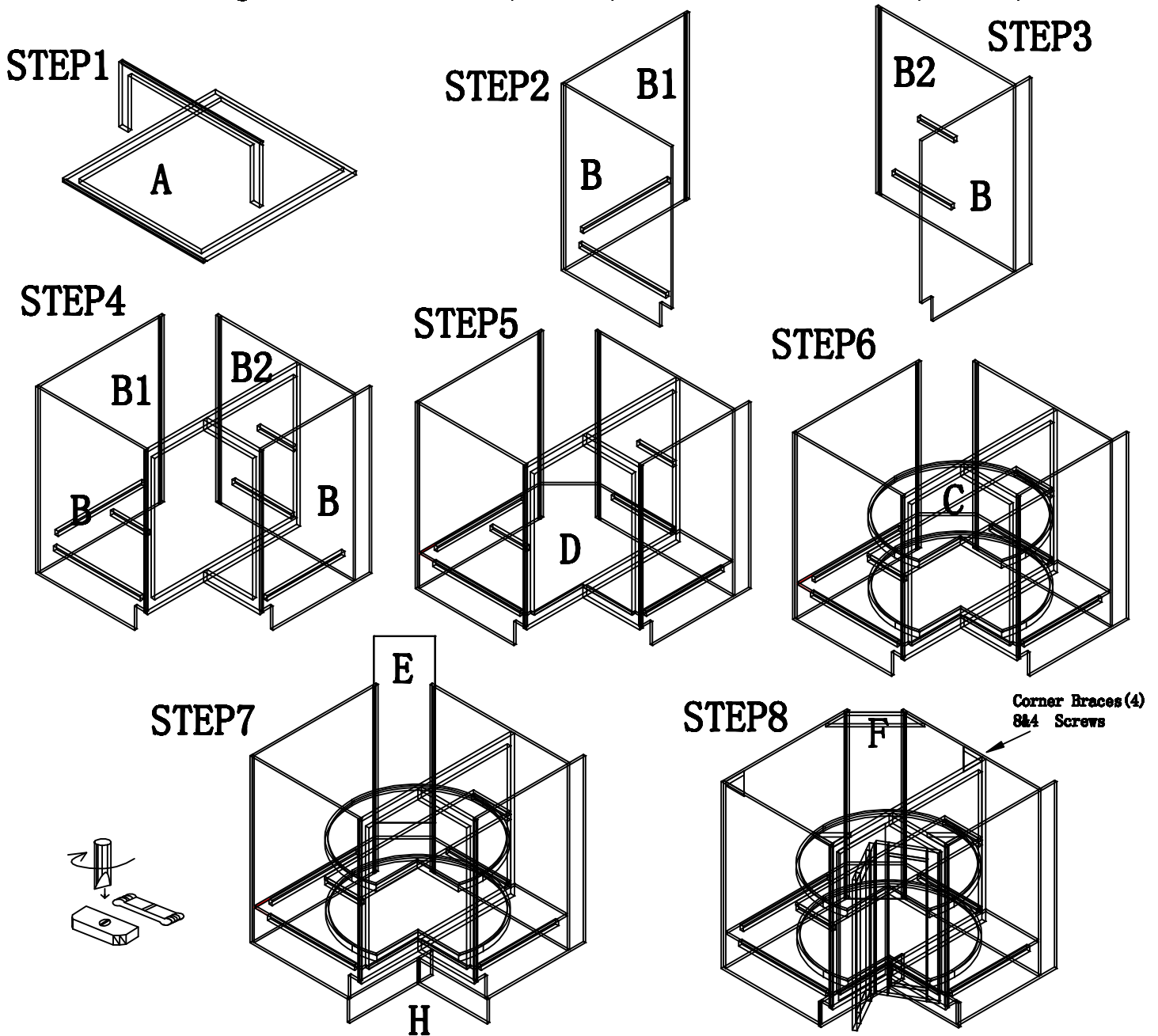
DIGANAL CORNER BASE CABINET (DCB3612)

CABINET PARTS LIST

A-Largest Face Frame/ Smallest Face Frame & Doors B-End Panels(2)
B1-Short End panel B2-long End Panel C-Shelf W/Turntable D-Bottom W/Turntable
E-Back Panel F-Top Back Brace H-Toe Kicks (2)

HARDWARE PARTS LIST

1. Corner Braces(4) 2. Screws(Ø3.5*25-4) 3. Screws(Ø3*12-8)
4. Shelf/W &Bottom/W Screws(Ø3*20-14) 5. Toe Kick Screws(Ø3*12-2)
6. Largest Face Farme Screws(Ø3*12-2) 7. Back Panel Screws (Ø3*10-2)



Your cabinet is complete. For installation, consult a professional contractor or building supplier for the proper installation method or materials to be used for your existing wall condition (e.g., wood, concrete, tile, etc.).