

SPEC SHEET 10 (RANGE HOODS, PANELS)

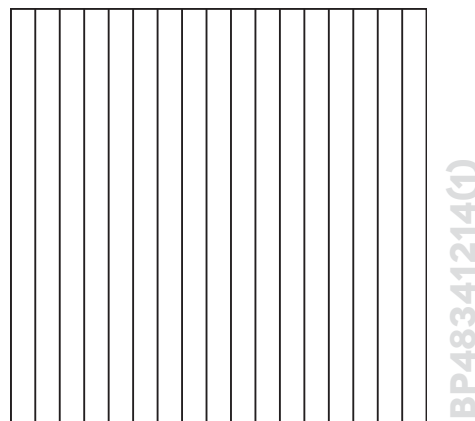
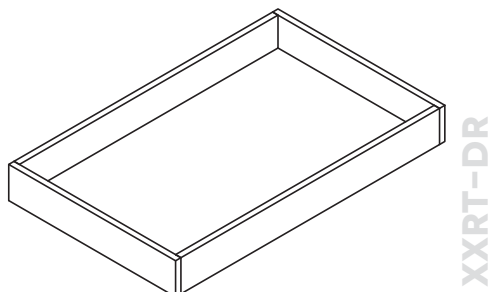
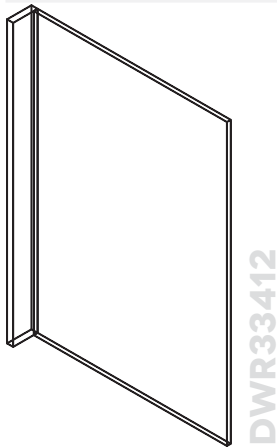


Item#	Width	Height	Depth	Door	Drawer	Shelf
AWH36	36"	24"	8"	0	0	0
MWO3018PM-12"	30"	18"	12"	0	0	1

Shelf Depth: 18", Opening: 14-1/8"H x 26-7/8"W

15RT-DR†	11"	2-7/8"	21"	0	0	0
18RT-DR†	14"	2-7/8"	21"	0	0	0
24RT-DR†	20"	2-7/8"	21"	0	0	0
27RT-DR†	23"	2-7/8"	21"	0	0	0
30RT-DR†	26"	2-7/8"	21"	0	0	0
33RT-DR†	29"	2-7/8"	21"	0	0	0
36RT-DR†	32"	2-7/8"	21"	0	0	0

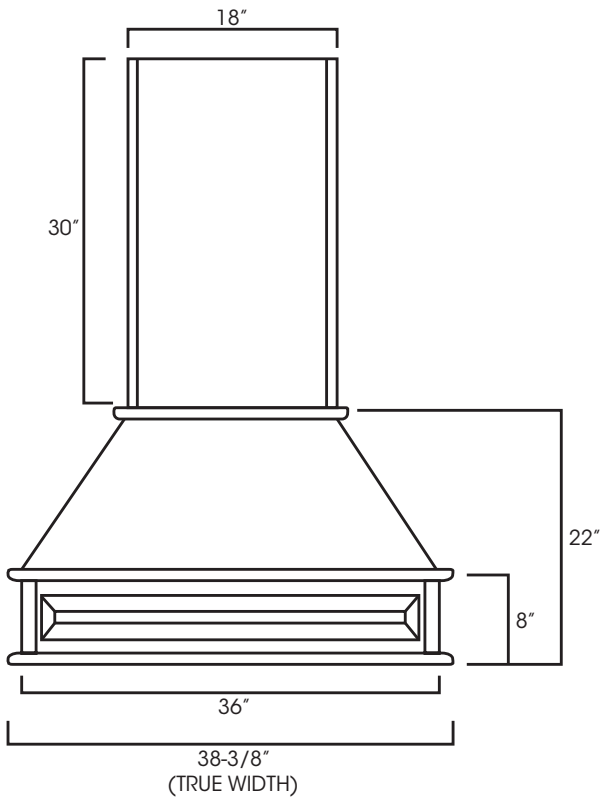
DWR33412	24"	34-1/2"	1/2"	1 Side Finish, 3" return (not attached)		
REP2484-3/4"	24"	84"	3/4"	2 Sides Finish (Banded Edge)		
REP2496-3/4"	24"	96"	3/4"	2 Sides Finish (Banded Edge)		
REP2484(3)-3/4"	24"	84"	3/4"	2 Sides Finish, 3" return (not attached)		
REP2496(3)-3/4"	24"	96"	3/4"	2 Sides Finish, 3" return (not attached)		
REP3096(3)-3/4"	30"	96"	3/4"	1 Sides Finish, 3" return (not attached)		
FBP489614(1)	96"	48"	1/4"	1 Side Finish (Vertical Grain)		
BP48341214	48"	34-1/2"	1/4"	1 Side Finish		
VAS48	48"	4-5/8"				



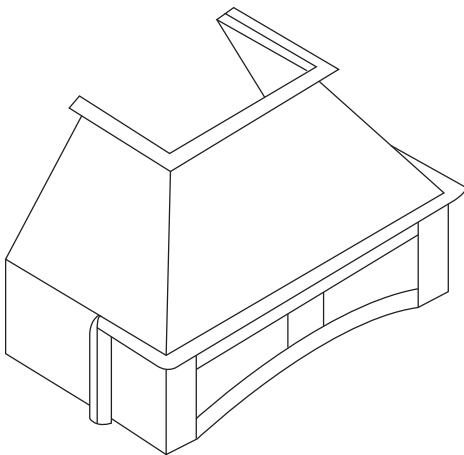
*The back of the drawer unit will not be dovetailed after modification.
 †Dovetail box

SPEC SHEET 11 (RANGE HOODS)

Item#	Width	Height	Depth
CWH36*	36" (38-3/8")	22"+30"	20-1/2"



CWH36 (ALL LINES EXCEPT PC)



DWH36 (PC)

PC style are with VAD style and no Top Tunnel (PC: Overall 36")

*Trimable, All hoods (except PC) will match door style

SPEC SHEET 12 (TRIM DETAILS)



Item#	Width	Height	Depth	
VAD3612	36"	12" / 8"		
VAD4212	42"	12" / 8"		
VAD4812	48"	12" / 8"		
VAL48B	48"	6"		<i>Trimmable 6" on both sides</i>
VAL54B	54"	6"		<i>Trimmable 6" on both sides</i>
VAL48S	48"	6"		<i>Trimmable 6" on both sides</i>
VAL54S	54"	6"		<i>Trimmable 6" on both sides</i>
CM96 (Plain)	2-1/2"	96"		
CM96-4 (Plain)	4-1/2"	96"		
CM96B-4 (Egg&Dart)	4-1/2"	96"		<i>Egg & dart attached</i>
CM96C-4 (Rope)	4-1/2"	96"		<i>Rope attached</i>
CM96D-4 (Dentil)	4-1/2"	96"		<i>Dentil attached</i>
CM96H-4	4-1/2"	96"		
CM96E-4	4-1/2"	96"		
CM96K-4 (Coved)	4-1/2"	96"		
TP3 / WF34-1 / 2"	3"	34-1/2"	3"	<i>Full leg. Comes with Wall Filler 3"x34-1/2"</i>
LEG28 B3x3 (SL ONLY)	3"	36-1/2"	3"	<i>Full leg. Must trim 2" off top or bottom.</i>
LEG75 B3x3	3"	36-1/2"	3"	<i>Full leg. Must trim 2" off top or bottom.</i>
LEG81	3"	34-1/2"	3"	<i>Full Leg</i>
LEG82	3"	34-1/2"	1-1/2"	<i>1/2 Leg.</i>
LEG83*	3"	34-1/2"	1-1/2"	<i>1/2 Leg *PC Style is 3" x 3" full leg.</i>
LEG-SMALL51	3"	4-1/2"	1-1/2"	<i>1/2 Leg</i>
LEG-SMALL52	3"	4-1/2"	1-1/2"	<i>1/2 Leg</i>
POLE28-B3 (SL ONLY)	3"	36-1/2"	3"	<i>Must trim 2" off top or bottom</i>
POLE28-W330 (SL ONLY)	3"	30"	2-1/4"	
POLE28-W336 (SL ONLY)	3"	36"	2-1/4"	
POLE28-W342 (SL ONLY)	3"	42"	2-1/4"	
POLE28-T384 (SL ONLY)	3"	84"	2-1/4"	<i>Trimmable to different length & depth</i>
POLE28-T390 (SL ONLY)	3"	90"	2-1/4"	<i>Trimmable to different length & depth</i>
POLE28-T396 (SL ONLY)	3"	96"	2-1/4"	<i>Trimmable to different length & depth</i>
POLE75-B3	3"	36-1/2"	3"	<i>Must trim 2" off top or bottom</i>
POLE75-W330	3"	30"	2-1/4"	
POLE75-W336	3"	36"	2-1/4"	
POLE75-W342	3"	42"	2-1/4"	
POLE75-T384	3"	84"	2-1/4"	<i>Trimmable to different length & depth</i>
POLE75-T390	3"	90"	2-1/4"	<i>Trimmable to different length & depth</i>
POLE75-T396	3"	96"	2-1/4"	<i>Trimmable to different length & depth</i>
CFC96*	3"	96"	2-1/4"	<i>Trimmable to different length & depth</i>

SPEC SHEET 12 (TRIM DETAILS)

Crown molding details applied. No installation required



CM96



CM96-4



CM96B-4



CM96C-4



CM96D-4



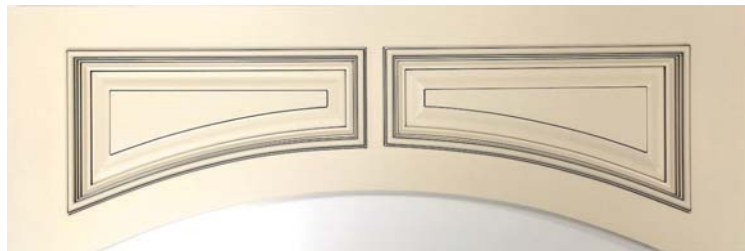
CM96E-4



CM96H-4



CM96K-4



VADXXXX



VALXXB



VALXXS



VAS48

SPEC SHEET 12 (TRIM DETAILS)



**TP3
(FILLER INCLUDED)**



**LEG 81
FULL LEG**



**LEG 82
HALF LEG**



**LEG 83
HALF LEG**



**LEG SMALL 51
HALF LEG**



**LEG SMALL 52
HALF LEG**



**LEG 28
FULL LEG**



**POLE28-B3
HALF LEG**



**POLE28-WFXXX
HALF LEG**



**LEG 75
FULL LEG**



**POLE75-B3
HALF LEG**



**POLE75-WFXXX
HALF LEG**

SPEC SHEET 13 (TRIM DETAILS)

Item#	Width	Height	Depth
DOA	19-7/8"	4-1/4"	
CORBEL54	3"	6"	4"
CORBEL55	3"	6"	4"
CORBEL56	3"	6"	4"
CORBEL57	3"	9"	6"
CORBEL59	3"	9"	6"
CORBEL60S	5"	10"	5"
CORBEL60L	7"	17"	7"
CORBEL75S	3-3/4"	6-1/2"	3-1/2"
CORBEL75M	5-1/4"	12-1/2"	4-1/2"
CORBEL75L	3-1/2"	12-1/2"	8"
SC4	3/4"	3/4"	96"
SC5*	1/4"	3/4"	96"
SC1-3*			96"
LRM8*	1-1/2"	1"	96"
TLRM8*	1-1/2"	2-1/4"	96"
BM4-1/2"-5/8"*	5/8"	4-1/2"	96"
TK8	1/2"	4-1/2"	96"



DOA



BM4



SC1



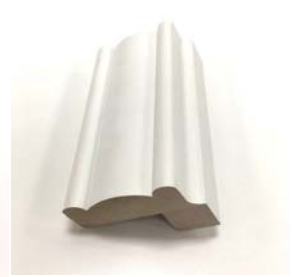
SC4



SC5



LRM8



TLRM8



SMALL: **CORBEL 54**
LARGE: **CORBEL 59**
Raised Center



CORBEL 55
CORBEL 58



CORBEL 56
CORBEL 57



SMALL
CORBEL 75S
Recessed
Center
MEDIUM
CORBEL 75M
Recessed
Center
LARGE
CORBEL 75L
Recessed
Center



CORBEL 60S
CORBEL 60L

*PC style 94-1/2"L

SPEC SHEET 14 (TRIM DETAILS)



Item#	Width	Height	Depth	
WF3-3/4	3"	30"	3/4"	
WF336-3/4	3"	36"	3/4"	
WF342-3/4	3"	42"	3/4"	
WF384-3/4	3"	84"	3/4"	
WF396-3/4	3"	96"	3/4"	
WF6-3/4	6"	30"	3/4"	
WF642-3/4	6"	42"	3/4"	
WF696-3/4	6"	96"	3/4"	
BF3-3/4	3"	34-1/2"	3/4"	
BF6-3/4	6"	34-1/2"	3/4"	
A30WF	3"	30"	3/4"	
A36WF	3"	36"	3/4"	
A42WF	3"	42"	3/4"	
A3BF	3"	34-1/2"	3/4"	
A6BF	6"	34-1/2"	3/4"	
CLB334-1/2	3"	34-1/2"	24"	
CLW330	3"	30"	15"	<i>Trimnable to different height, width</i>
CLW336	3"	36"	15"	<i>Trimnable to different height, width</i>
CLW342	3"	42"	15"	<i>Trimnable to different height, width</i>
CLW396	3"	96"	27"	<i>Trimnable to different height, width</i>
OLF330	2-1/2"	29-1/4"	3/4"	
OLF336	2-1/2"	35-1/4"	3/4"	
OLF342	2-1/2"	41-1/4"	3/4"	
OLF630	5-1/2"	29-1/4"	3/4"	
OLF636	5-1/2"	35-1/4"	3/4"	
OLF642	5-1/2"	41-1/4"	3/4"	
OLF384	2-1/2"	78-3/4"	3/4"	
OLF390	2-1/2"	84-3/4"	3/4"	
OLF396	2-1/2"	90-3/4"	3/4"	